

# Polycare<sup>®</sup> Split Therapy

Durable cure for split ends

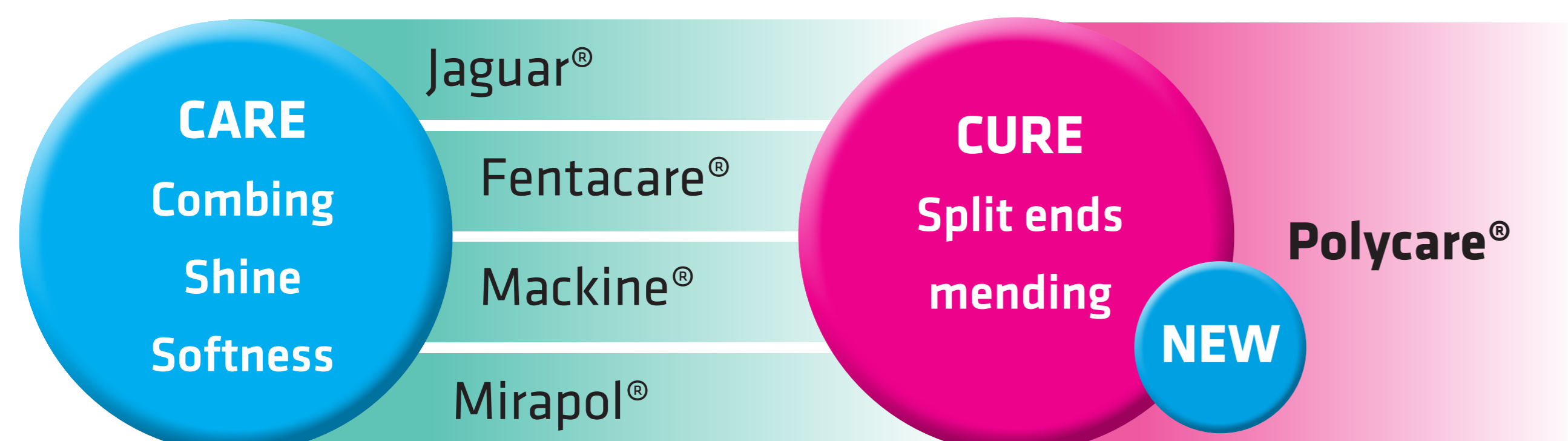


**SOLVAY**

asking more from chemistry<sup>®</sup>

A new functional ingredient creating value for consumers, formulators and the planet

Polycare<sup>®</sup> Split Therapy is an innovative natural-based functional ingredient developed to repair split ends. This new technology is optimized to deliver perceivable and durable repair of split ends from the first use, without compromising on sensory.



- Recommended use level: 0.5 – 1.0%
- 100% active, Preservative-free



## BENEFITS

### FORMULATORS

- Polycare<sup>®</sup> Split Therapy can be used directly in the formulation, no premix needed
- Cold process, compatible with rinsed-off and leave-on chassis

### CONSUMERS

- Perceivable and durable split ends repair, from first use and onwards, after combing or washing
- Pleasant texture and spreadability, without stickiness on hands and hair
- Split ends mending performance without sensory negatives on hair (weighing down, oily feel, flakes)

### ENVIRONMENT

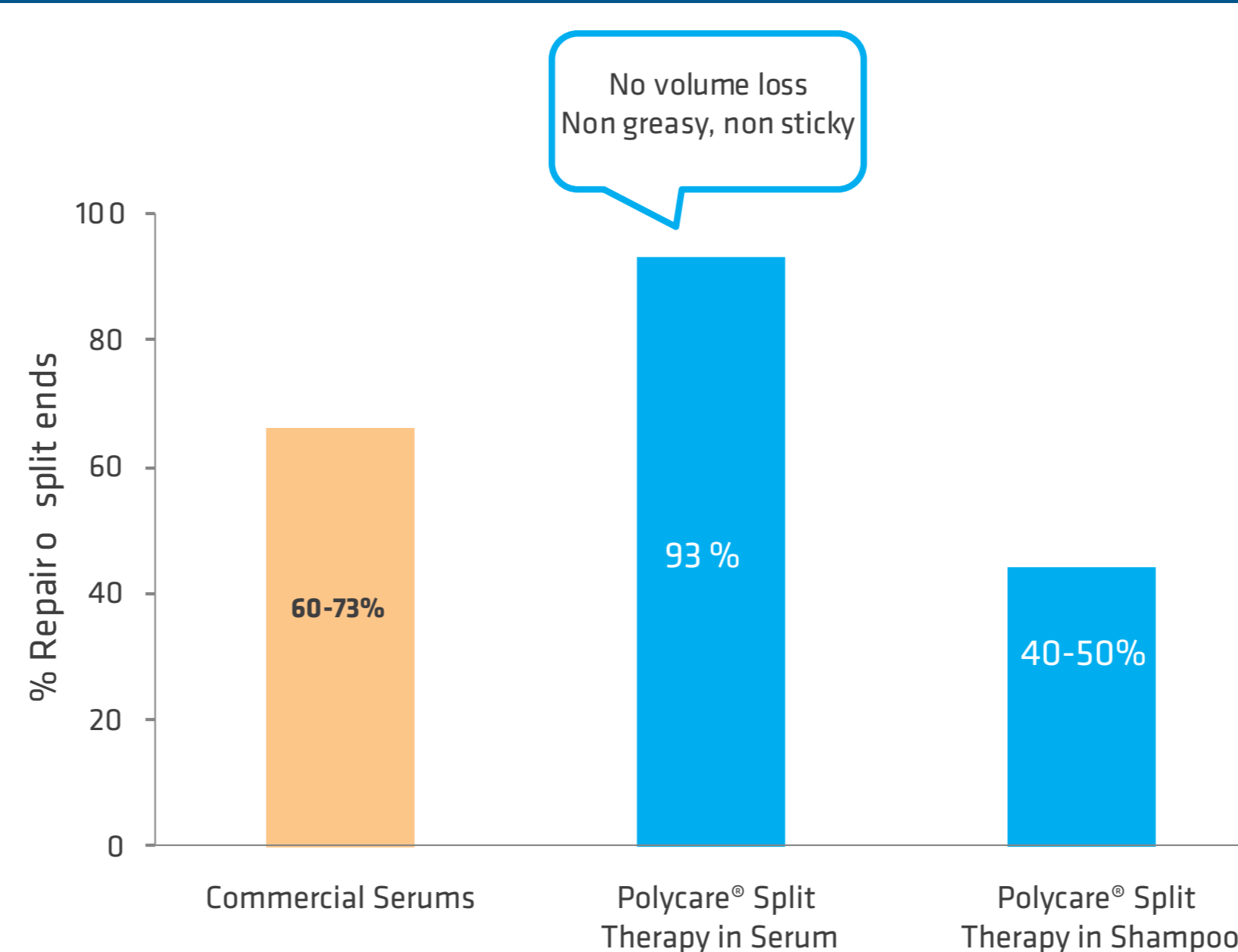
- Vegetable-based, less non-renewable resources used, RCI > 70%
- Non-ecotoxic, Non-irritating

## Polycare<sup>®</sup> Split Therapy Serum and Shampoo

### Split ends Repair Performance

- Texture & Spreadability
- Durability (combing, wash-out)
- Delivers improved softness & shine
- No stickiness, no flakes, no build-up

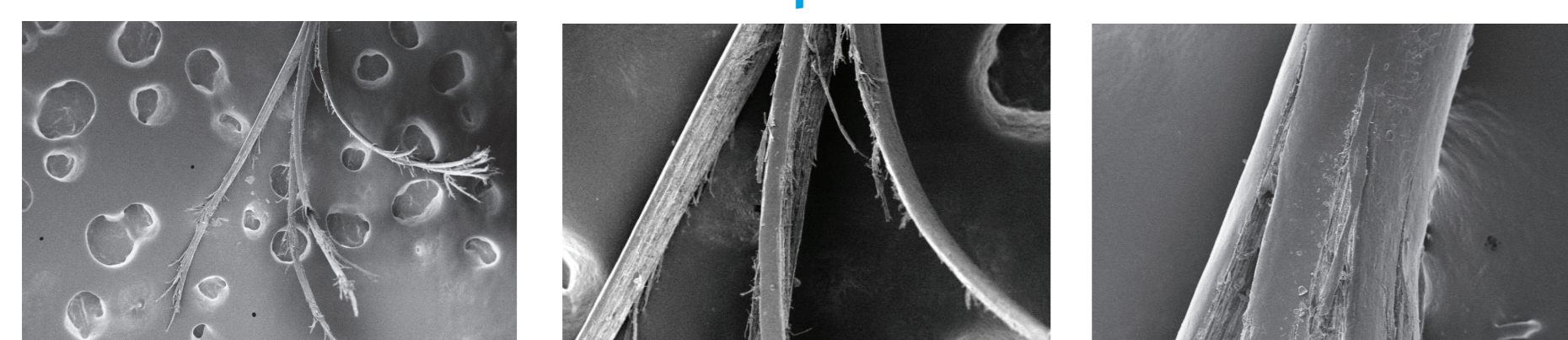
More than 90% split ends sealed from 1st use



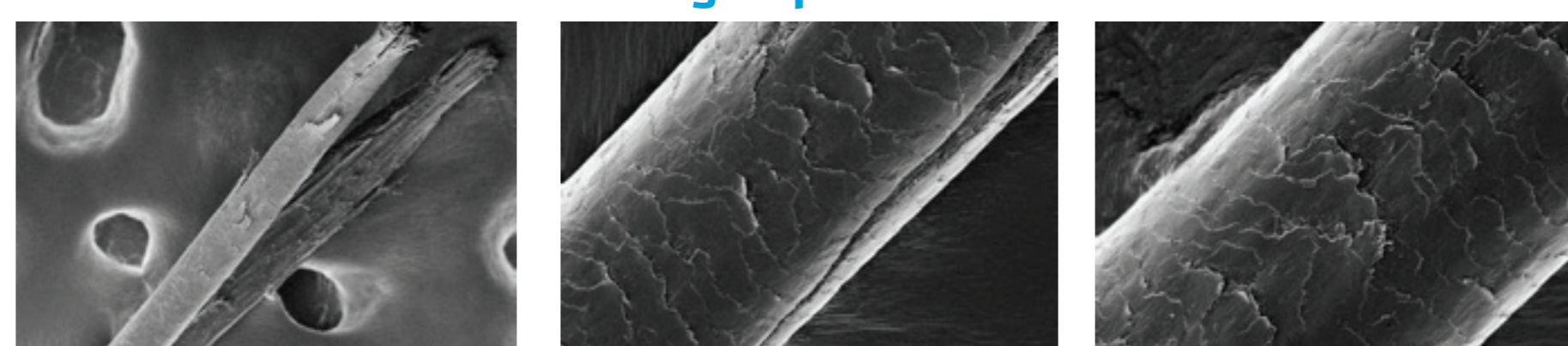
**Solvay simplified serum (tested on 5 hair kits):** water, 10% ethanol, 1% glycerin, 0.5% Polycare<sup>®</sup>, 0.5% panthenol, sodium benzoate  
**Shampoo:** 12/2 SLES/CAPB, 0.5% Polycare<sup>®</sup>, 1.2% NaCl

## Split ends and damaged cuticles

### Multi-split end

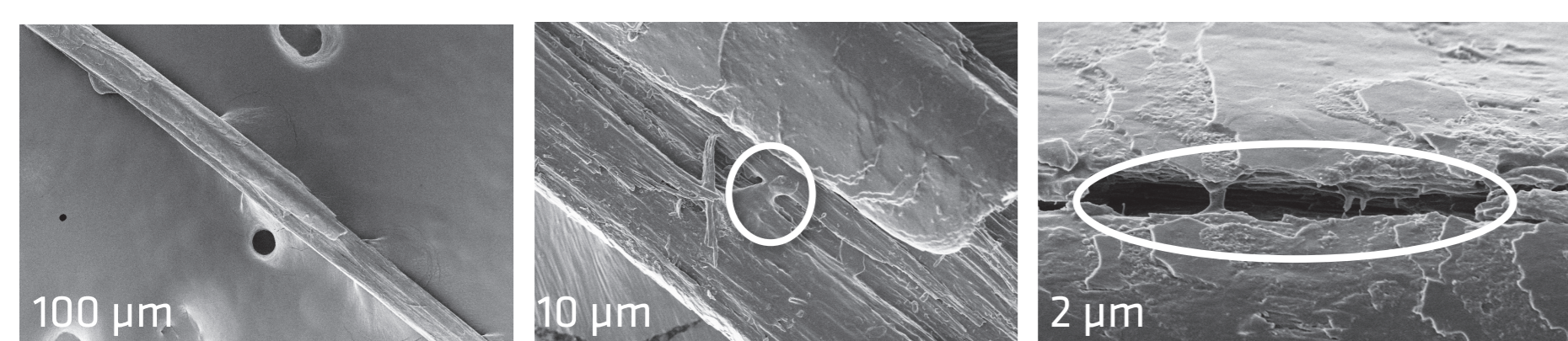


### Single split end



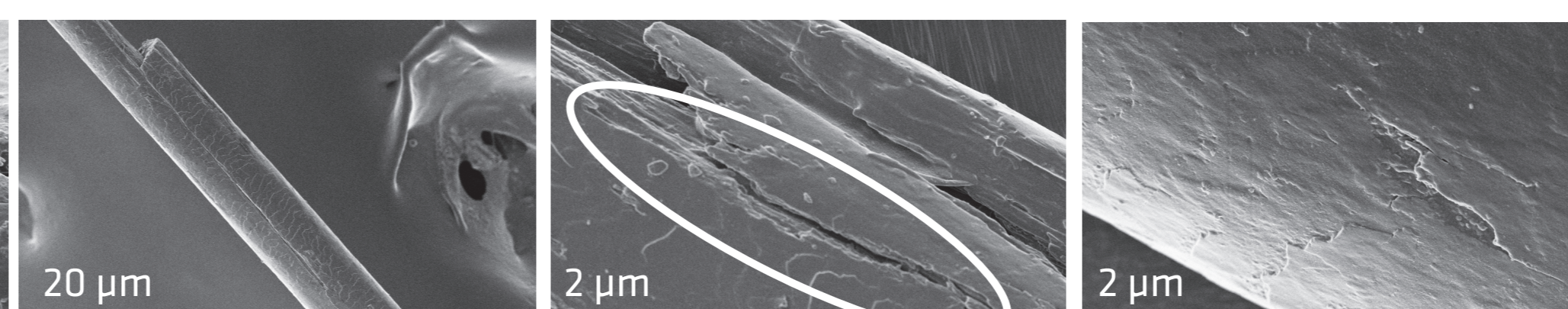
Scanning Electron Microscopy

### How does Polycare<sup>®</sup> perform after 1 serum application?



- ▶ Hair surface looks smoother, cuticles are partially repaired
- ▶ Partial sealing of split ends, sufficient to bring the splits together
- ▶ Bridges between split ends parts

### How does Polycare<sup>®</sup> perform after 3 serum applications?

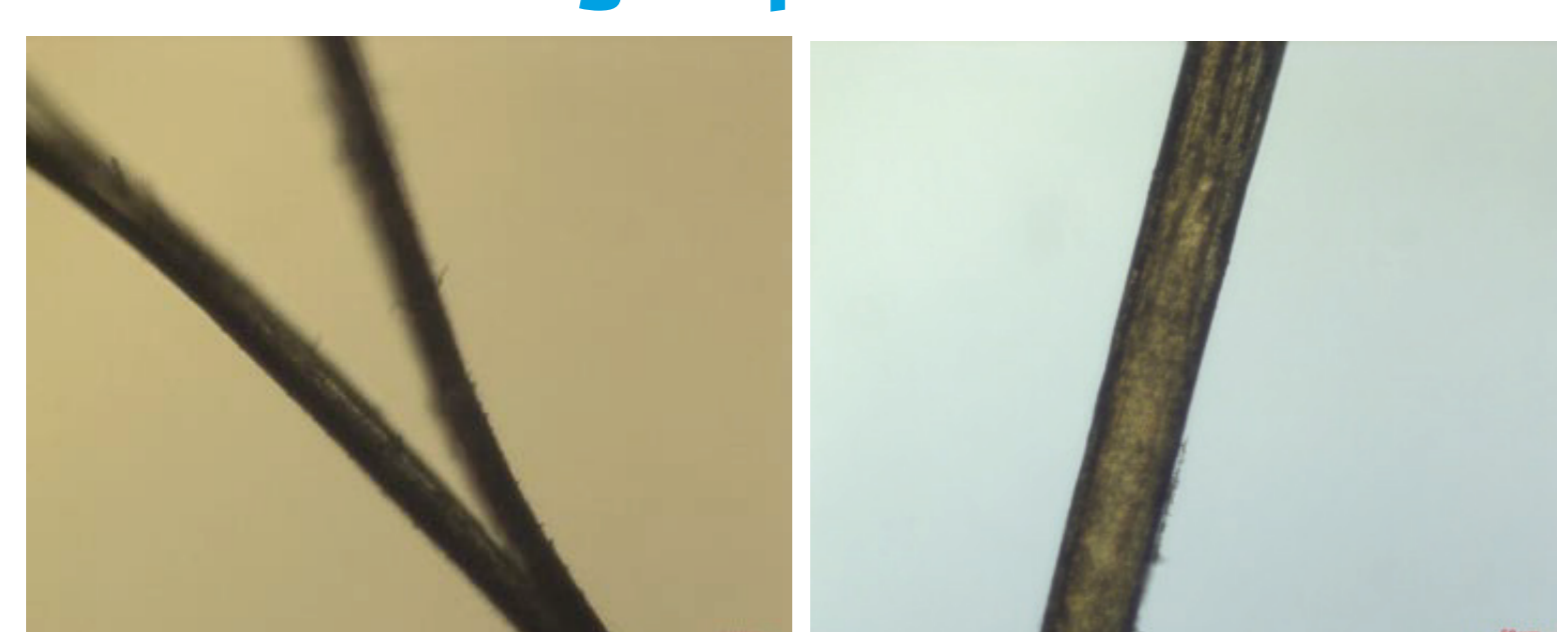


After 3 applications, split ends are fully sealed and cuticles layed down

Scanning Electron Microscopy

## Consumer-perceivable repair evidenced by microscopy

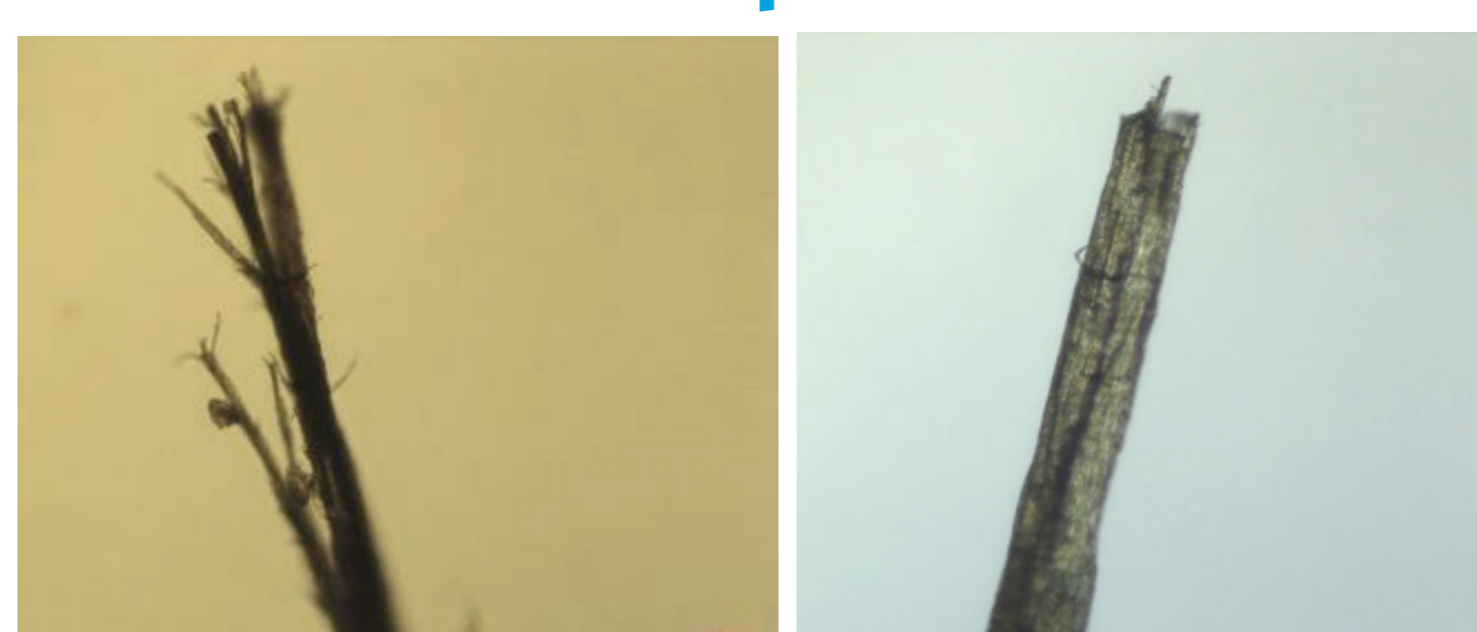
### Single split end



Before treatment

After treatment

### Multi-split end



Before treatment

After treatment

### Split Therapy Shampoo

Ingredient	% Active
Rhodapex <sup>®</sup> ESB30HA1 (SLES)	9-14
MACKAM <sup>®</sup> 50 SB (CAPHS)	2-4
<b>Polycare<sup>®</sup> Split Therapy</b>	<b>0.5</b>
Carbomer	0.3
Dimethicone emulsion	2-3
Mirasheen <sup>®</sup> STAR NB (Pearliser)	2-3
Preservative	qs

### Split Therapy Serum

Phase	Ingredient	% Active
A	Cetearyl Alcohol	2.5
	Glyceryl Stearate	1.2
B	Deionised water	Qs to 100
	<b>Fentacare<sup>®</sup> 2231 MS 90 (BTMS)</b>	<b>up to 0.2</b>
	<b>Polycare<sup>®</sup> Split Therapy</b>	<b>0.5</b>
C	<b>Mackaderm<sup>®</sup> LIA</b>	<b>4</b>
	Preservative	qs
	Citric Acid	qs

Formulations examples. Can be tuned to adapt sensorial benefits per hair type.